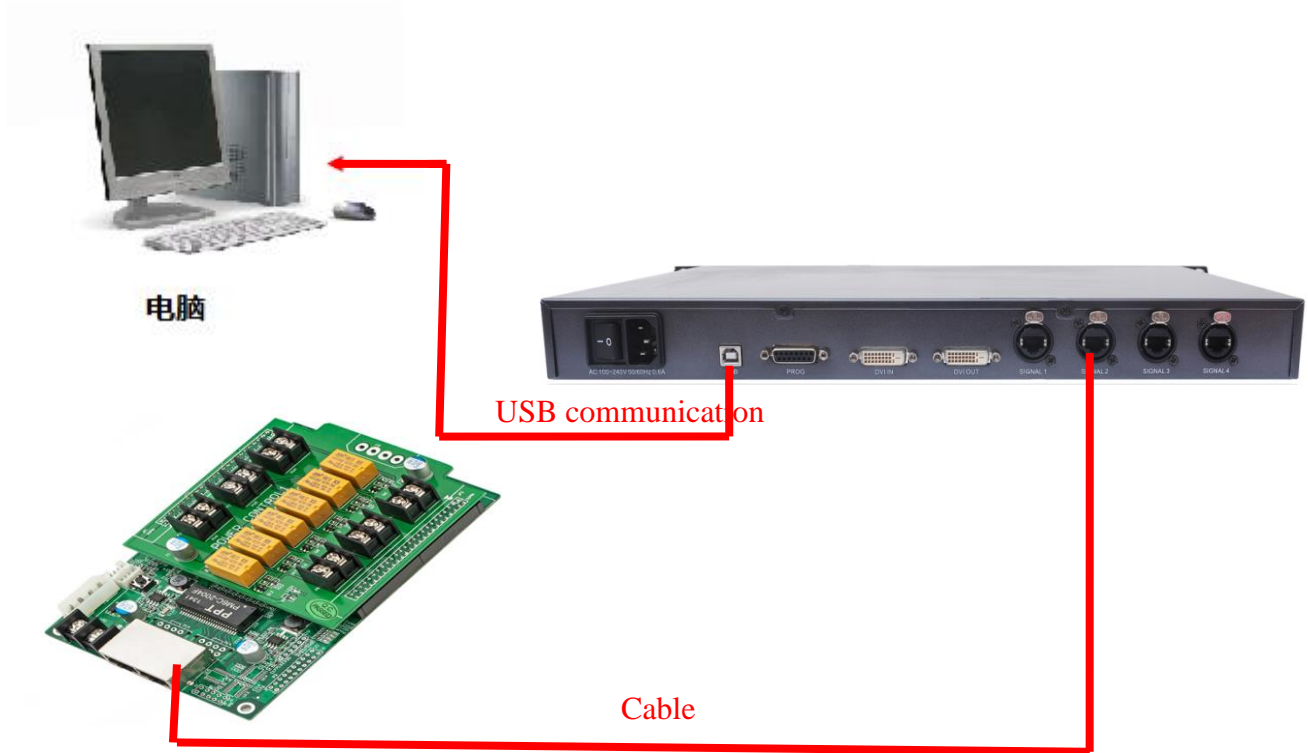


## CONTENTS

1. System hardware connection diagram .....	1
2. Software setting .....	2
2.1 To introduce the interface of power timing adjusting .....	2
2.2 Power timer switch settings .....	3
2.3 Remarks .....	4

## 1. System hardware connection diagram



Description of power control card hardware connection:

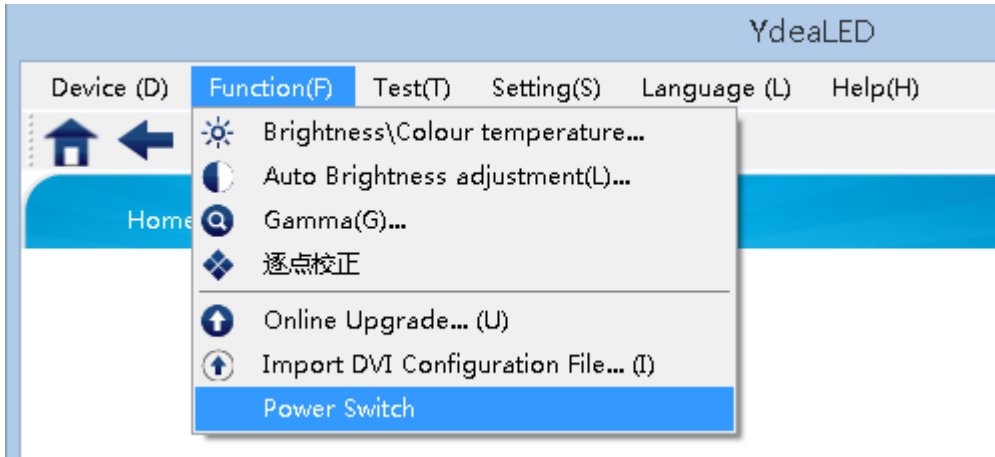
- 1) There are six-channel port in power control card, it's largest control six-channel power.
- 2) If there are idle in the main controller port .Such as, you only use port1 to output signal, the main controller port 2, 3, 4 no signal output. And then , you can connect power control receiving card to main controller port 2 or port 3 or port 4. Because through the control software to setting parameters will at the same time to sending parameters to the four port.
- 3) If there are no idle in the main controller port, four port has a signal output, this time, you can connect the power control card to concatenation receiving card. You must use the last receiving card's output signal port of concatenation to connect power control card.If the power control card placed in other positions, there will be an exception.

## 2. Software setting

### 2.1 Power timing adjustment Interface Introduction

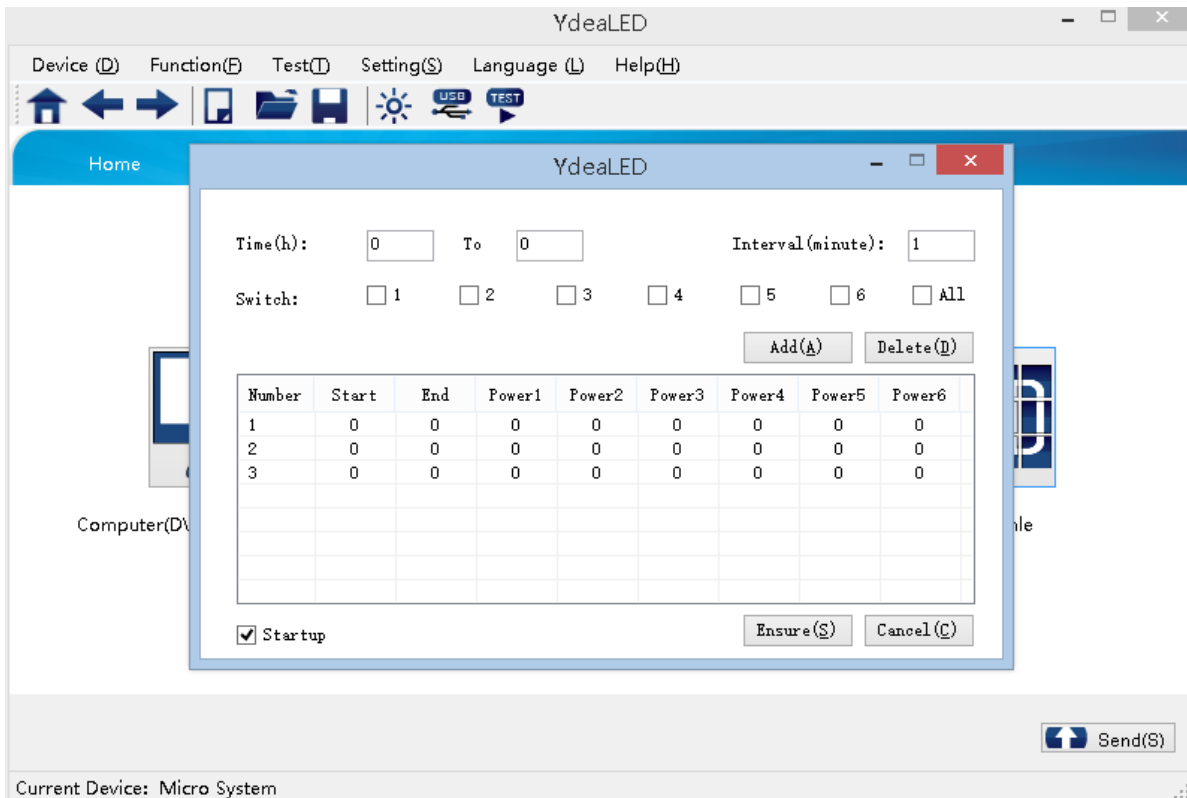
#### 1) Into the automatic brightness adjustment interface

Start LED control software, click function, select a power timer switch, as shown in Figure

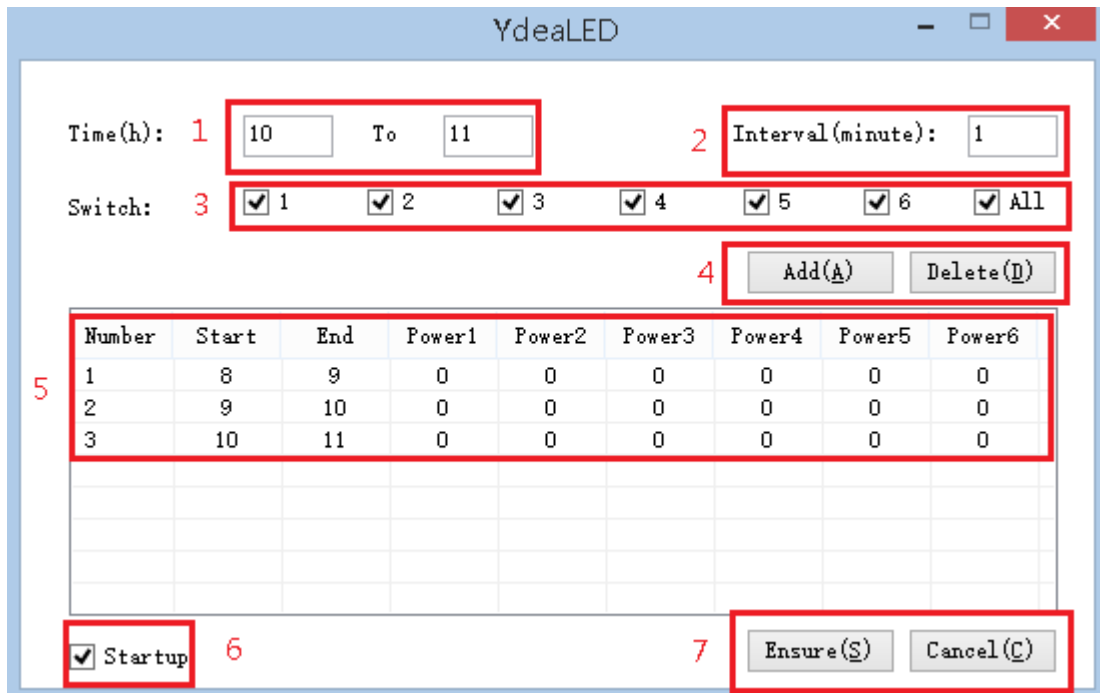


#### 2) Interface Introduction

After entering the power to adjust the timing switch interface, The pop-up window shown in Figure.



## 2.2 Power timer switch settings



Ydealed

Time(h): 1  To  2 Interval(minute):

Switch: 3  1  2  3  4  5  6  All

4

5

Number	Start	End	Power1	Power2	Power3	Power4	Power5	Power6
1	8	9	0	0	0	0	0	0
2	9	10	0	0	0	0	0	0
3	10	11	0	0	0	0	0	0

6  Startup 7

1) Adjustment interface Features:

- ① Start Time: You can set the time period.
- ② Query interval: You can set a different time queries to adjust.
- ③ Power switch options: You can set different opening and closing times of the power control card six-channels.
- ④ Add button: After setting, click add, to add the current settings to the timing open list. .
- ⑤ Timing list: It shows a timing of start-up list that you added.
- ⑥ Start button: After setting, click the Start button, the software can run timing functions.
- ⑦ Finish button: After setting, click finish, exit this interface, The software can run in the background timer start program.

## 2.3 Remarks

1. Power control card can be used idle main controller port, You can also use the output port of the last cascade receiving card to connect.
2. When the system starts timing scheme, PC software must be running, Forced to close software, It will give tips on the controller software “software running in the background timing scheme, sure you want to exit the program.”. If you exit the PC software, the power control card timing function will not work normal.